

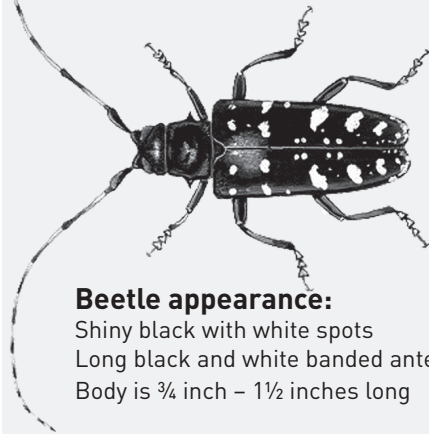
Help Stop the Asian Longhorned Beetle:

The Asian Longhorned Beetle was discovered in Worcester, MA in the summer of 2008. This beetle infests many types of hardwood trees - including maple, birch and poplar - posing a huge threat to the natural and cultural resources of New England.

The trees that line your streets, grow in your backyard, and fill your parks and forests are all at risk. We need your help to find these beetles before they spread to other parts of New England!

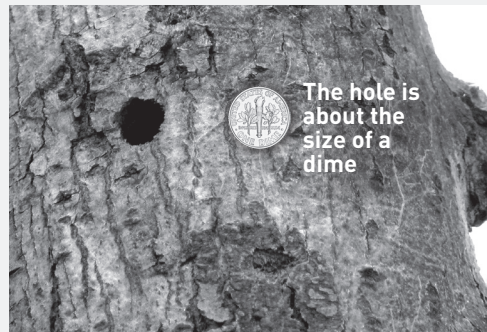
ALB Identification Tips:

Actual size of beetle



Beetle appearance:

Shiny black with white spots
Long black and white banded antennae
Body is $\frac{3}{4}$ inch – $1\frac{1}{2}$ inches long



The hole is about the size of a dime

Tree Damage:

Perfectly round exit holes with smooth edges, approx. $\frac{5}{8}$ " diameter
Egg-laying sites resemble a $\frac{1}{2}$ " divot chewed into in the bark

For more information, visit <http://dontmovefirewood.org> or call toll-free: (866) 702-9938 This information is brought to you by a partnership between Purity Spring Resort, Danforth Bay Camping & RV Resort, and DontMoveFirewood.org

HELP PROTECT THE FORESTS OF THE WHITE MOUNTAINS AND LAKES REGIONS OF NEW HAMPSHIRE

Invasive forest pests like the Asian Longhorned Beetle can travel short distances on their own, but when people move firewood, they can hitchhike hundreds of miles.

Your favorite resorts, campgrounds, hiking trails and ski areas throughout New England depend on healthy forests. We must protect them by not moving firewood, so our kids, grandkids and great-grandkids can enjoy these amazing places like we do.

You have the power to prevent a new infestation:

- Don't move firewood
- Buy firewood where you will burn it
- Ask your firewood seller if their wood is locally cut-preferably in the same county
- Tell your friends why it is dangerous to move firewood

Learn more about forest pests:

The Asian Longhorned Beetle is a very serious threat to trees in New England. But it is just one of several introduced forest pests that threaten the Northeast.

To learn more, visit



**DONT MOVE
FIREWOOD**
dontmovefirewood.org

Purity Spring Resort
A Family Tradition



Danforth Bay
CAMPING & RV RESORT
DANFORTHBAY.COM



THE GRANTHAM FOUNDATION
FOR THE PROTECTION OF THE ENVIRONMENT

This information is brought to you by a partnership between Purity Spring Resort, Danforth Bay Camping & RV Resort, and DontMoveFirewood.org