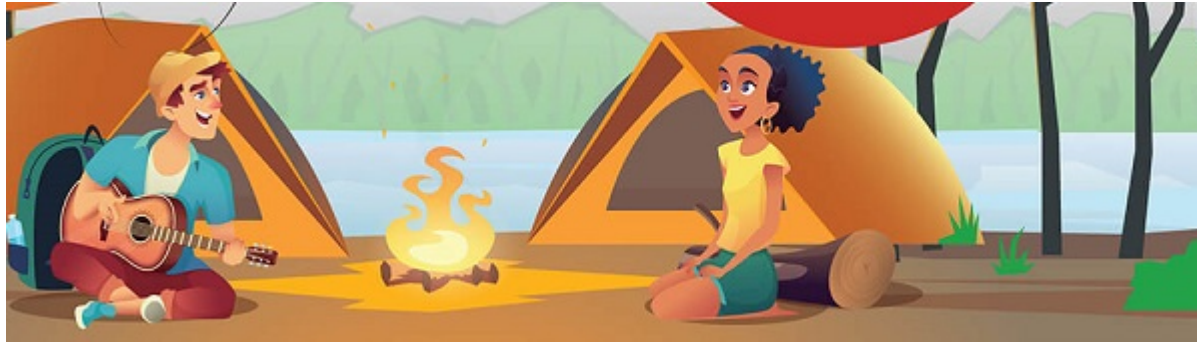


If you are having trouble viewing this e-mail, please [visit us here](#).

FOCI Newsletter

Firewood Outreach Coordinating Initiative

BROUGHT TO YOU BY
**DON'T MOVE
FIREWOOD.org**



Welcome to Firewood Month!

Now heading into its fourth year, Firewood Month is a way to amplify and unify firewood educational messaging across North America. This year, we're especially excited to see our friends in Canada are participating- they have launched a coordinated national campaign to the north, [Buy Local Burn Local](#), that includes a new infographic just on [Firewood Month](#). You can find the new Canadian infographic and a huge selection of other resources (including social media examples, radio ads, short videos, and more) to choose from on our Toolkit page.

[Visit the Firewood Month Toolkit >>](#)

If Shorter = Better, this is gonna be GREAT

The Don't Move Firewood campaign's 10 year survey is still open... and we heard you loud and clear that our first online survey was too long. **We're sorry! In response, we've launched a new ULTRA SHORT survey.** It is just six questions! After those six questions there are a couple questions about you, which are just to allow us to illustrate that we got a good variety of respondents. All professionals and volunteers that work with firewood outreach in any capacity (direct outreach, management, policy, design, writing, and others) are invited to take the survey. You can choose to take the survey anonymously, or you can provide your email to be entered in a raffle to win a fun prize!

[Take the SIX QUESTION survey NOW>>](#)

Proposal to Deregulate Pine Shoot Beetle

The pine shoot beetle is a non-native forest insect that feeds on not only the young shoots of pine (as the name suggests), but also along the trunks of pine trees. Because of this, firewood is a regulated item in the current pine shoot beetle federal quarantine. In September, a proposed rule to deregulate pine shoot beetle was opened for public comment on [Regulations.gov](https://www.regulations.gov). For some background reading on this issue, we suggest the following references from the USA and Canada:

- [USDA APHIS: Pine Shoot Beetle, *Tomicus piniperda*, Analysis of Regulatory Options, published February 19, 2015](#)
- [Canadian Food Inspection Agency: RMD-19-02: Pest Risk Management Document for the deregulation of *Tomicus piniperda* \(pine shoot beetle\)](#)

Last Chance! Discuss Firewood, Emerald Ash Borer, and so much more!

All are invited to the Continental Dialogue on Non-native Forest Insects and Diseases in Cleveland, this November 19th-20th 2019. We'll be covering a myriad of forest health topics- but readers of this newsletter will likely be most interested in topics such as the National Plant Board Firewood Working Group, the update on the emerging science of beech leaf disease, and the talk on how states beyond Pennsylvania are working on the issue of spotted lanternfly. Join us for a great meeting with lots of professional opportunities and great company.

[Find the draft agenda and register here >>](#)

Photo of the month: Canada's newly launched national Buy Local, Burn Local campaign includes posters, handouts, and the infographic that is shown here. Find them all at <http://buylocalburnlocal.ca/>

Infestations and Regulations

Spotted Lanternfly- what state lacks out?

Recent analysis of the spotted lanternfly's climate tolerance has shown that it could spread to nearly every state in the union- even including parts of Alaska! It turns out Hawai'i is too tropical for their liking- so, ok, aside from Hawai'i, what single other state does NOT have suitable climate for this worrisome pest?

[Find the answer here >>](#)

FORWARD THIS TO A
COLLEAGUE »

In the News

[Emerald ash borer detected in Larimer County \(CO\)](#)
Oct 2 2019

[A tiny beetle has decimated hundreds of SoCal trees. Now experts are worried about Sacramento](#)

Don't Move Firewood Campaign

Winter is Coming

November and December will be here before you know it, and the Don't Move Firewood campaign is ready for all the "well, if firewood can be a problem, what about my Christmas trees?" questions that begin to pop up as the weather cools down. Get yourself prepared with solid answers, good graphics, and some ready-made materials on our Holiday Greenery page!

[Visit the Holiday Greenery page >>](#)

Sept 19 2019

[How firewood became a hot topic](#)

Sept 15 2019

[APHIS Adds the Entire State of Maine to the Gypsy Moth \(Lymantria dispar\) Regulated Area](#)

Sept 5 2019

Share firewood news tips

Input from our readers is vital to the success of this newsletter — and to the mission it serves. Have you heard (or done) something that you think we and other readers should hear about? Please tell us about it!

[Submit Your Story](#)

If you no longer wish to receive these emails, please click on the following link: [Unsubscribe](#)



Don't Move Firewood
4245 North Fairfax Drive, Suite 100
Arlington, Virginia 22203-1606

