

FIREWOOD ALERT!

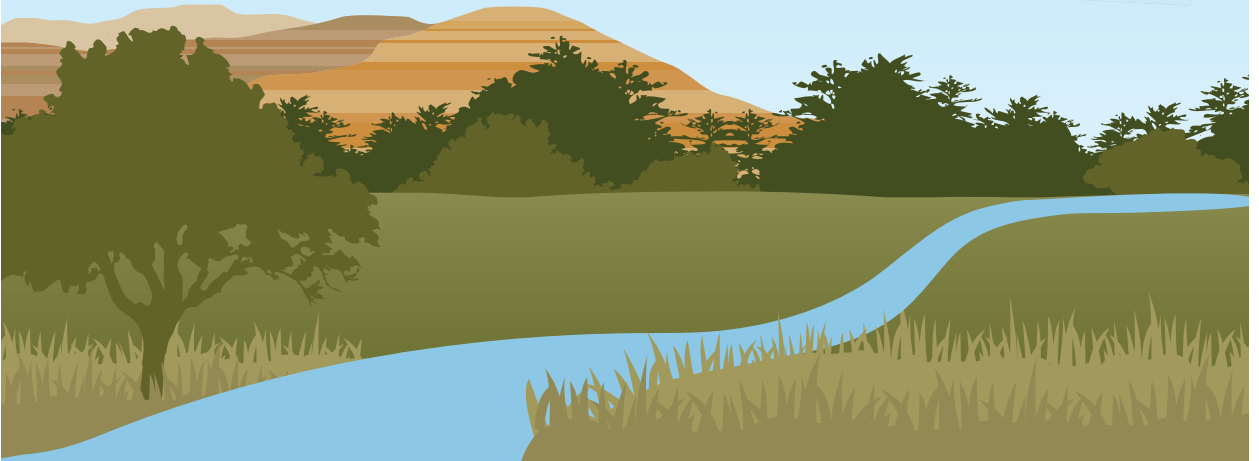
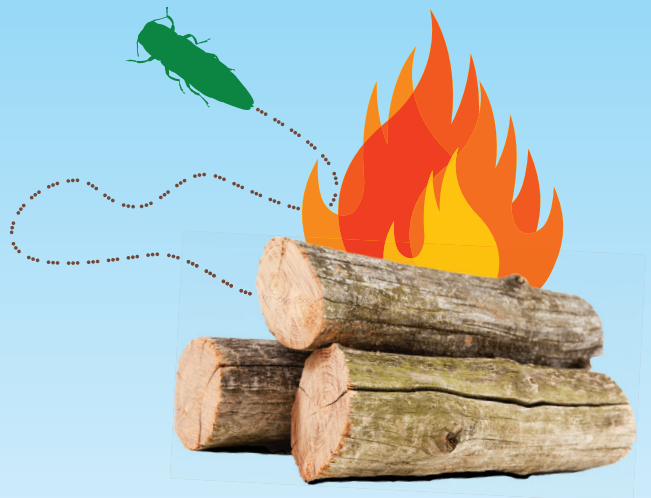
Pests like the invasive emerald ash borer can hitchhike in your firewood. Help slow the spread of pests — don't move firewood.

BUY IT WHERE YOU BURN IT.

Protect North Dakota's trees!

- ▶ Leave firewood at home — buy local firewood at or near your destination, or collect firewood on site when permitted.
- ▶ Buy or collect only what you'll need, and use it all up by the end of your stay.
- ▶ If you have already moved firewood, use it immediately. Do not take it home with you and do not leave excess firewood on site.

You have the power to protect our trees and forests.



**DON'T MOVE
FIREWOOD.org**



Doug Goehring,
Agriculture Commissioner

www.NDInvasives.org
www.nd.gov/ndda