

Asian longhorned beetle mask

Staple pipe cleaners
or paper antenna
behind here



DONTMOVE
FIREWOOD.org

For best results:

Print mask only on cardstock or other thick paper. Apply a thin coat of white school glue or gluestick. Sprinkle all parts liberally with silver and blue glitter. Let dry. Attach twisted white and black (or pale blue and black) pipe cleaners to emerge from top as shown. Cut out eye and string holes. Add string and wear proudly!

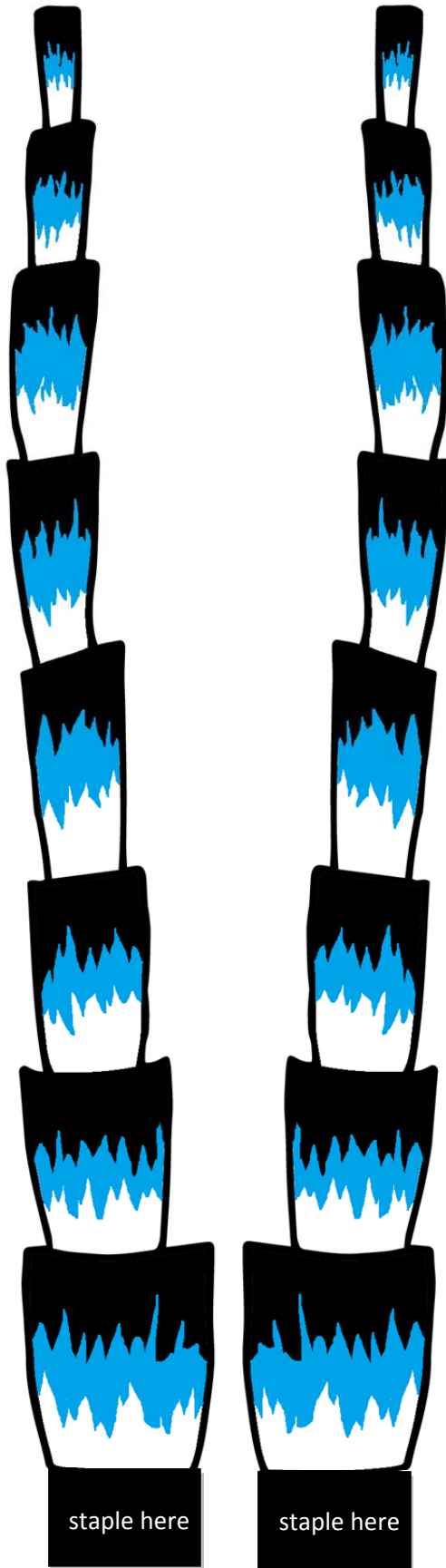
Easiest method:

Print mask and antenna page on cardstock or other thick paper. Cut out eye and string holes. Staple on antennae, printed from page 2. Add string and wear proudly!

The **Asian longhorned beetle** is a non-native invasive tree killing pest that infests and kills maple, birch, and other deciduous trees. You can prevent the spread of this pest by buying local firewood, or certified heat-treated firewood before you go.

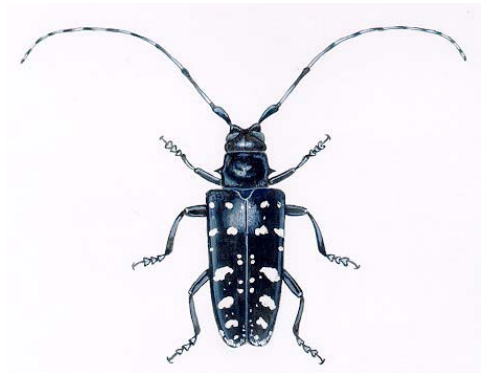
Asian longhorned beetle mask

Antenna page: Print out this page if you do not have pipe cleaners available.



Instructions:

Cut out each antenna, giving the edge of the antenna about a ½" of space away from the drawing to provide the paper with more strength. Glue popsicle sticks to the back if available, to prevent flopping over. Staple antennae onto mask as shown, placing the antenna's black rectangle behind the mask before stapling.



approximate actual size

The Asian longhorned beetle is ¾" to 1 ½" long with antennae longer than their body. They are very shiny and often have a powder blue color on their feet.

To learn more, visit asianlonghornedbeetle.com

Report any beetles you see that may be the Asian longhorned beetle at asianlonghornedbeetle.com or 1-866-702-9938

Don't Move Firewood has made several bug masks for you to use with your forest pest and pathogen outreach. To find these masks and lots more, visit **Don't Move Firewood** at dontmovefirewood.org, or email info@dontmovefirewood.org