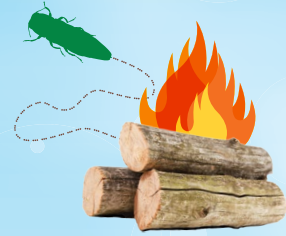


# FIREWOOD ALERT!

You have the power to protect Illinois forests and trees!

## BUY IT WHERE YOU BURN IT.



Tree-killing pests hitchhike in firewood — spreading insects and diseases that destroy our trees and forests. You can prevent the spread of these damaging pests by following these firewood tips:

- ▶ Only burn locally harvested or certified firewood.
- ▶ Don't take firewood with you from home when you head out to camp.
- ▶ Tell your friends not to move firewood.

## What might be in your firewood?

**THOUSAND CANKERS DISEASE** of black walnut is caused by the walnut twig beetle and a fungus it carries to trees. The walnut twig beetle is tiny — about the size of the “i” on a dime — and thousands of them could be hiding in the bark of a single piece of walnut firewood.



**GYPSY MOTH** is a devastating pest of oaks and other trees. Female moths lay tan patches of eggs on firewood, campers, vehicles, patio furniture — anything outside! When these items are moved to new areas, this pest gets a free ride.

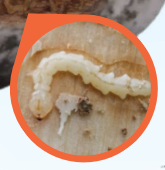
**SPOTTED LANTERNFLY** sucks sap from dozens of tree and plant species. This pest loves tree-of-heaven but will feed on black walnut, white oak, sycamore, and grape. Like the gypsy moth, this pest lays clusters of eggs on just about any dry surface, from landscaping stone to firewood!



**OAK WILT** is a deadly disease of oak trees, especially red oaks. This disease is a fungus spread between trees by small beetles — and this deadly fungus could easily be brought to your neighborhood or favorite camping spot through infected firewood.



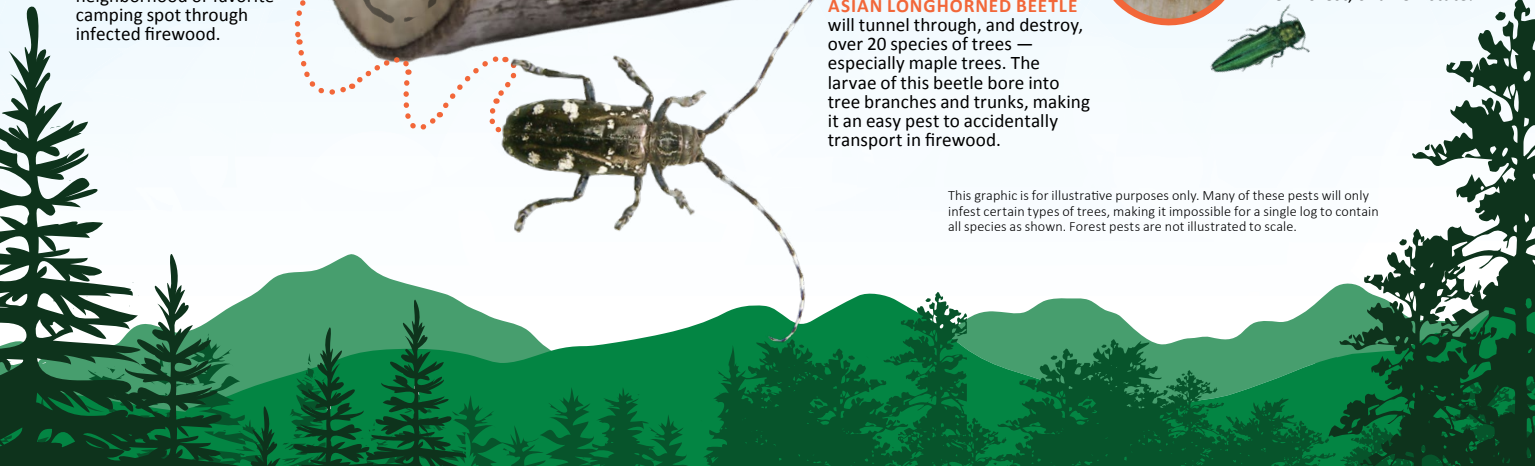
**EMERALD ASH BORER** — the infamous killer of ash trees — is found in forests and city trees across much of the eastern and central United States. This insect is notoriously good at hitchhiking rides in infested firewood. Don't give this tree-killing bug a ride to a new forest, or a new state!



**ASIAN LONGHORNED BEETLE** will tunnel through, and destroy, over 20 species of trees — especially maple trees. The larvae of this beetle bore into tree branches and trunks, making it an easy pest to accidentally transport in firewood.



This graphic is for illustrative purposes only. Many of these pests will only infest certain types of trees, making it impossible for a single log to contain all species as shown. Forest pests are not illustrated to scale.



For more information, visit [dontmovefirewood.org](http://dontmovefirewood.org).